



**US Highway 18 – Davis
SD Highway 19 – Viborg**

SD Highway 44 – Parker & Chancellor

SD Highway 19A – Centerville

SD Highway 46 – Irene

**Americans with Disabilities Act (ADA)
Curb Ramp Construction**

Ron Peterson, Yankton Area Engineer

Craig Smith, Sioux Falls Area Engineer



Project Need

- **SDDOT completed an assessment of the status of pedestrian accessibility of the State Highway System in 2007.**
- **SDDOT has developed a transition plan to meet the accessibility needs that were identified.**
- **Phase 1 of the transition plan is to upgrade intersection corners to meet current ADA requirements.**



Project Scope

- **Install ADA compliant curb ramps at all intersections where sidewalk currently exists.**
- **Sidewalk between intersection corners will be retained.**
- **A few surface drainage problems have been identified at intersections in Viborg and will be addressed with the project.**



Project Scope

- **Street lighting to be retained. Some poles may be relocated to accommodate curb ramps.**
- **Storm sewer to be retained. Some modifications will be necessary to accommodate curb ramps.**
- **Utility Relocation (as necessary)**
- **Estimated Project Cost = \$200,000**



SD44 / Main St. - Chancellor





SD44 / Alley - Chancellor





New Curb Ramp Installation





New Curb Ramp Installation



09/28/2010



Detectable Warning Panel





Project Limits

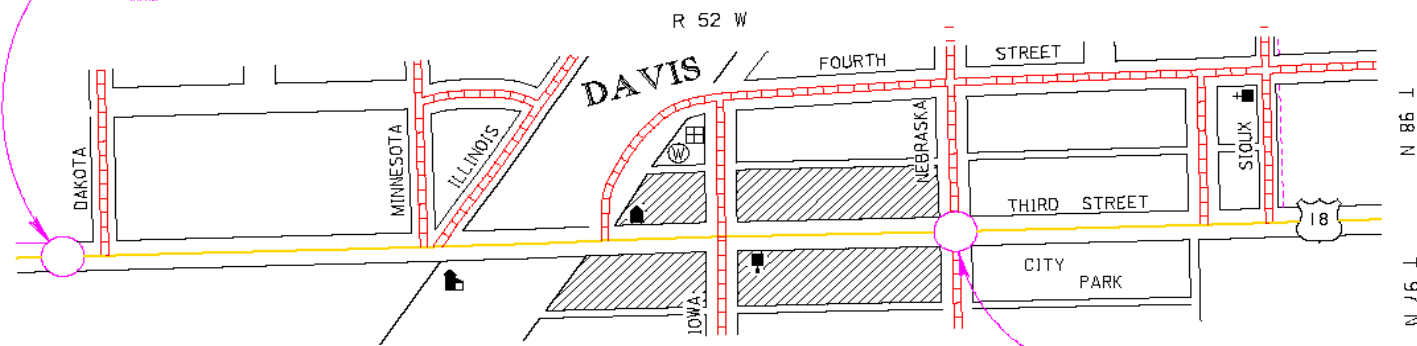
US18 in Davis

STATE OF SOUTH DAKOTA	PROJECT NH 0018(164)425	SHEET D1	TOTAL SHEETS 51
Plotting Date: 23-SEP-2010			

PROJECT NH0018(164)425 US HIGHWAY 18 TURNER COUNTY CURB & GUTTER, CURB RAMPS & SIDEWALK PCN 02BA



BEGIN PROJECT NH0018(164)425
 Station 223+00.00 = 223+00.00 on
 F 244 (9) Approximately 58.13'
 North and 1246.17' East of the
 SW Corner of Section 33-Township
 98 North-Range 52
 MRM =



END PROJECT NH0018(164)425
 Station 241+56.00 = 241+56.00 on
 F 244(9) Approximately 93.47'
 South and 2166.52' West of the
 SE Corner of Section 33-Township
 98 North-Range 52
 MRM =

GROSS LENGTH	1856.00 FEET	0.3515 MILES
LENGTH OF EXCEPTIONS	0 FEET	0 MILES
NET LENGTH	1856.00 FEET	0.3515 MILES

PLOT SCALE - 1"=100.00 FEET

PLOT SCALE - 1"=100.00 FEET

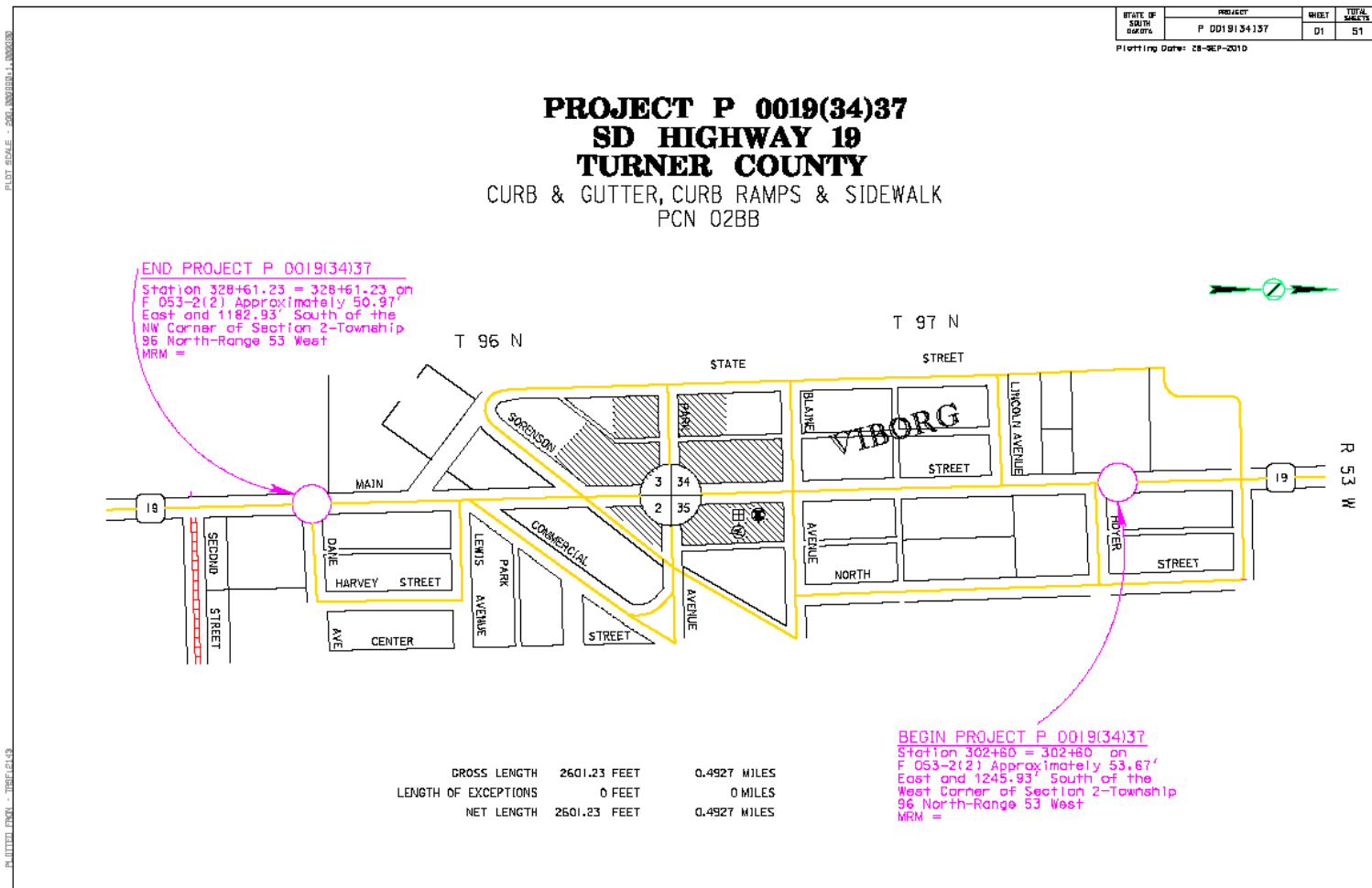
PLOT DATE - 08

FILE - \\SD\PROJECTS\NH0018\FILES\JOB



Project Limits

SD19 in Viborg



PLOT SCALE - 2000' UNITS @ 1" = 2000'

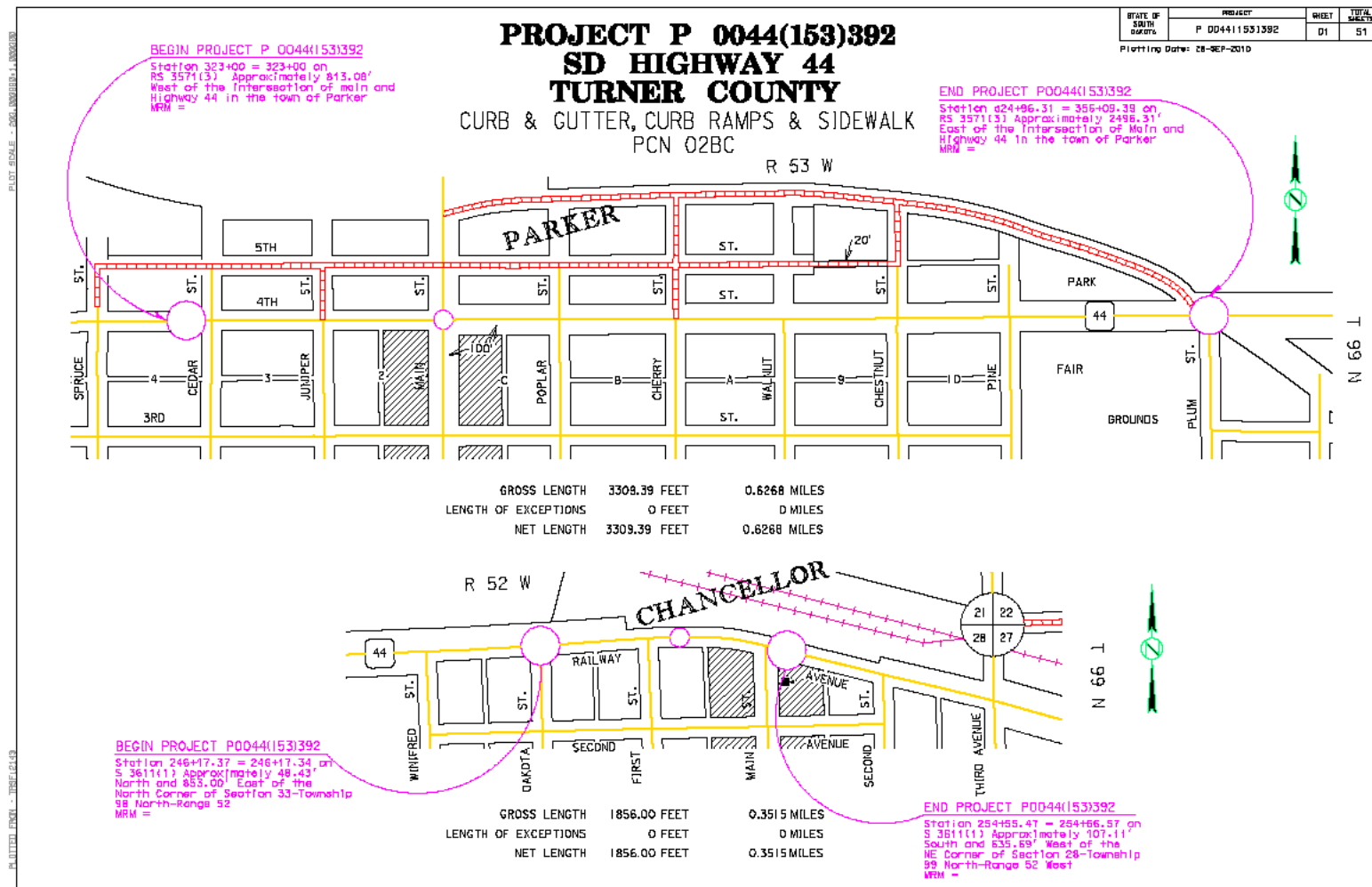
PLOT DATE: 28-SEP-2010

PLOT DATE: 28-SEP-2010



Project Limits

SD44 in Parker & Chancellor





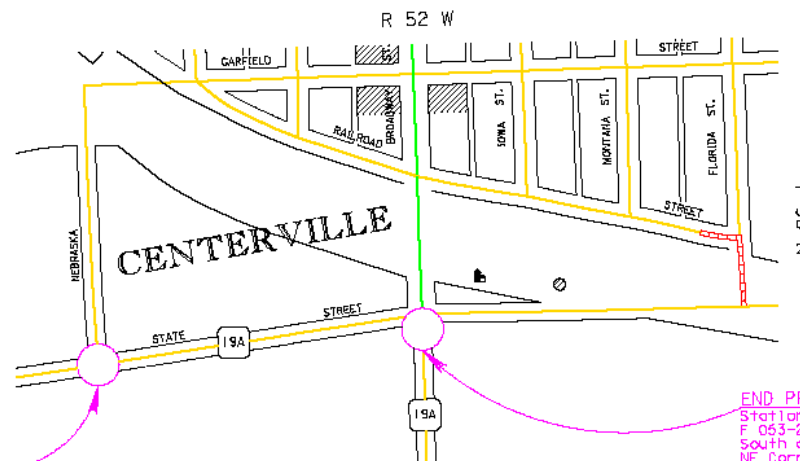
Project Limits

SD19A in Centerville

STATE OF SOUTH DAKOTA	PROJECT	SHEET	TOTAL SHEETS
	P 019A(27)27	1	51

Plotting Date: 01-OCT-2010

PROJECT P 019A(27)27
US HIGHWAY 19A
TURNER COUNTY
 CURB & GUTTER, CURB RAMPS & SIDEWALK
 PCN 02BD



BEGIN PROJECT P 019A(27)27

Station 308+30.48 = 308+30.48, on
 F 053-2 Approximately 200.62'
 South and 1156.29' West of the
 NE Corner of Section 27-Township
 9S North-Range 52 West
 MRM = 27.59 + 0.000

END PROJECT P 019A(27)27

Station 320+98.53 = 241+56.00' on
 F 053-2 Approximately 93.38'
 South and 5.33' West of the
 NE Corner of Section 27-Township
 9S North-Range 52 West
 MRM = 27.23 + 0.297

GROSS LENGTH	1268.05 FEET	0.2402 MILES
LENGTH OF EXCEPTIONS	0 FEET	0 MILES
NET LENGTH	1268.05 FEET	0.2402 MILES

PLOT SCALE - 2000 UNITS TO 1 INCH

PLOT DATE - 01-OCT-2010

PLOT DATE - 01-OCT-2010

FILE - U:\WORK\PROJECTS\019A\TITLE.DWG



Project Limits

SD46 in Irene

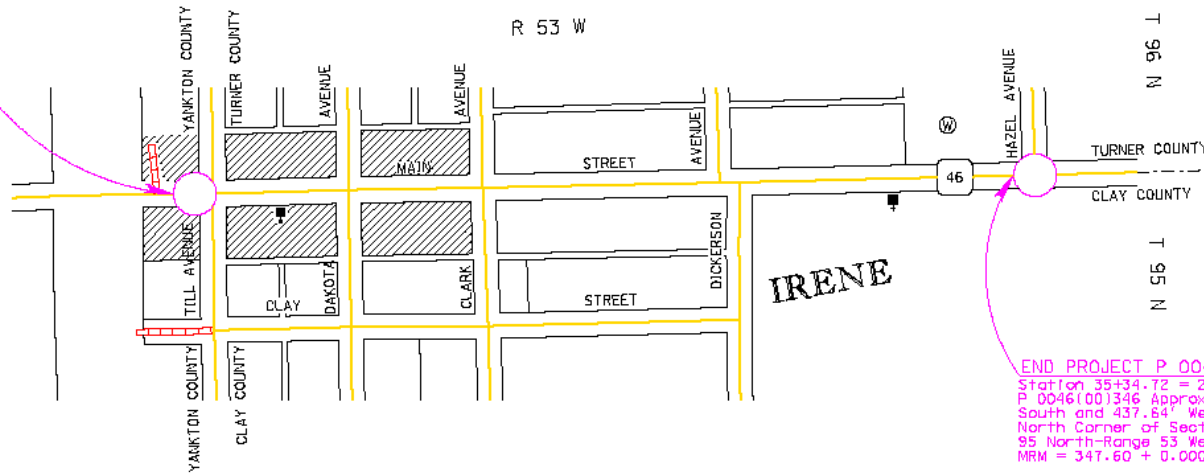
STATE OF SOUTH DAKOTA	PROJECT	SHEET	TOTAL SHEETS
	P 0046(51)346	1	51

Plotting Date: 01-OCT-2010

PROJECT P 0046(51)346
US HIGHWAY 46
TURNER COUNTY
 CURB & GUTTER, CURB RAMPS & SIDEWALK
 PCN 02G3

BEGIN PROJECT P 0046(51)346
 Station 13+00 = 13+00 on
 P 0046(00)346 Approximately 2.49'
 South and 77.83' West of the
 NE Corner of Section 1-Township
 95 North-Range 54 West
 MRM = 346.56 + 0.143

END PROJECT P 0046(51)346
 Station 35+34.72 = 241+56.00 on
 P 0046(00)346 Approximately 17.70'
 South and 437.64' West of the
 North Corner of Section 6-Township
 95 North-Range 53 West
 MRM = 347.60 + 0.000



GROSS LENGTH	2234.72 FEET	0.4232 MILES
LENGTH OF EXCEPTIONS	0 FEET	0 MILES
NET LENGTH	2234.72 FEET	0.4232 MILES

PLotted Date: 01-OCT-2010

FILE: U:\WORK\PROJECTS\100810\100810.DWG



Right-of-Way Needs

- **Permanent Easements & Temporary Easements**
 - Intersection corners only
 - Required for installation of ADA compliant curb ramps
 - Average proposed permanent easement acquisition at each corner is 45 sq. ft. (Range = 8 sq.ft. to 268 sq.ft.)



Encroachments

- Encroachments are privately owned items that are located on the public highway right-of-way. Examples – signs, landscaping.
- SDDOT Area Offices will conduct an encroachment survey in all of the cities.
- Encroachments will be reviewed by SDDOT Area Offices. Some signs (such as private advertising) will need to be removed.



Construction Traffic Plan ADA Curb Ramp Projects

- Mainline traffic will not be affected
- Access to adjacent properties will be maintained



What's Next?

- Mailing sent to all landowners affected by proposed permanent easement and temporary easement acquisition – November / December 2010
- ROW appraisals and negotiations with landowners – Begin Early 2011
- Letting – Fall 2011
- Construction in 2012



AC Mill & Overlay Projects

- SD19 from the W. Jct. with SD46 to the S. Jct. with US18 through Viborg.
- SD44 from the S. Jct. with SD19 to the Jct. with SD17 through Chancellor & Lennox.
- (Estimated Project Cost \$6.0 Million – Total for both projects)
- Both projects scheduled for 2012 construction.



Construction Traffic Plan AC Mill & Overlay Projects

- Construction 1/2 roadway at a time
- Traffic maintained with flaggers (pilot car possible)
- Access to adjacent properties will be maintained



Conclusion

- More Information can be found at <http://www.sddot.com/ada.asp>

QUESTIONS?